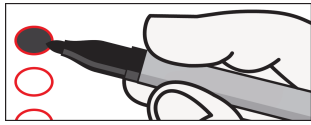


SAMPLE GENERAL ELECTION BALLOT
Archuleta County, Colorado
Tuesday, November 3, 2020

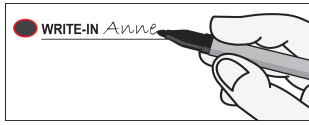
Precinct: **LPFPD ISSUE**
Ballot Type: **SAMPLE**
Ballot Style: **ONLY**

! Please vote your mail ballot. Due to COVID-19, help us make this a safe election for everyone by returning this ballot via mail or drop box.

Instructions



To vote for a named candidate, completely fill in the oval to the left of your choice. Use blue or black ink.



To vote for an eligible write-in candidate, completely fill in the oval to the left of the write-in line, and print the name of the candidate on the line.



To make a correction, draw a bold line through the oval and candidate name marked by mistake. Then, completely fill in the oval next to the correct name.

WARNING: Any person who, by use of force or other means, unduly influences an eligible elector to vote in any particular manner or to refrain from voting, or who falsely makes, alters, forges or counterfeits any mail ballot before or after it has been cast, or who destroys, defaces, mutilates, or tampers with a ballot is subject, upon conviction, to imprisonment, or to a fine, or both. Section 1-7.5-107(3)(b), C.R.S.

Ballot Measures

Ballot questions referred by the general assembly or any political subdivision are listed by letter, and ballot questions initiated by the people are listed numerically. A ballot question listed as an "amendment" proposes a change to the Colorado constitution, and a ballot question listed as a "proposition" proposes a change to the Colorado Revised Statutes. A "yes/for" vote on any ballot question is a vote in favor of changing current law or existing circumstances, and a "no/against" vote on any ballot question is a vote against changing current law or existing circumstances.

Los Pinos Fire Protection District

Ballot Issue 7A

SHALL LOS PINOS FIRE PROTECTION DISTRICT TAXES BE INCREASED \$1,528,124 ANNUALLY IN THE FIRST FULL YEAR (2020 TAXES PAYABLE IN 2021) AND BY SUCH AMOUNTS AS MAY BE COLLECTED ANNUALLY THEREAFTER FROM A MILL LEVY NOT TO EXCEED 9.5 MILLS (THE EXISTING VOTER APPROVED 3.52 MILLS AND THE ADDITIONAL 5.98 MILLS); TO BE USED FOR OPERATING AND OTHER EXPENSES INCLUDING:

- MAINTAINING AND EXPANDING THE LOCAL ADVANCED LIFE SUPPORT AMBULANCE AND PARAMEDIC COVERAGE CAPABILITIES
- ADDING VOLUNTEER EMERGENCY RESPONDERS AND NON-EMERGENT VOLUNTEER STAFFING, INCLUDING THEIR PERSONAL PROTECTIVE EQUIPMENT AND TRAINING
- SECURING AND MAINTAINING THE MINIMUM CAREER STAFFING, INCLUDING THEIR PERSONAL PROTECTIVE EQUIPMENT AND TRAINING
- DEVELOPING A COMPREHENSIVE REPLACEMENT SCHEDULE FOR EQUIPMENT AND DEVELOPING CONTINGENCY RESERVES.

AND SHALL THE APPROVED MILL LEVY BE SUBJECT TO ADJUSTMENT TO OFFSET FUTURE CHANGES TO THE PERCENTAGE OF ACTUAL VALUATION USED TO DETERMINE ASSESSED VALUATION SUCH THAT THE ACTUAL TAX REVENUES GENERATED BY THE VOTER APPROVED MILL LEVY, AS ADJUSTED, ARE NEITHER DIMINISHED NOR ENHANCED AS A RESULT OF SUCH CHANGES; AND SHALL THE DISTRICT BE AUTHORIZED TO COLLECT, RETAIN AND SPEND THE PROCEEDS OF SUCH TAXES AND ALL OTHER AMOUNTS RECEIVED ANNUALLY FROM ANY REVENUE SOURCES AS A VOTER-APPROVED REVENUE CHANGE TO ANY SPENDING, REVENUE-RAISING OR OTHER LIMITATION CONTAINED WITHIN ARTICLE X, SECTION 20 OF THE COLORADO CONSTITUTION OR SECTION 29-1-301, C.R.S.?

YES/FOR NO/AGAINST

SAMPLE

SAMPLE